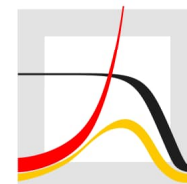


PAA 2023

ANNUAL MEETING

APRIL 12-15, 2023

**OUR RESEARCH
FINDINGS**



PAA SESSION 79-1: HUMAN FERTILITY AFTER A DISASTER: A SYSTEMATIC LITERATURE REVIEW




RESEARCH FINDINGS

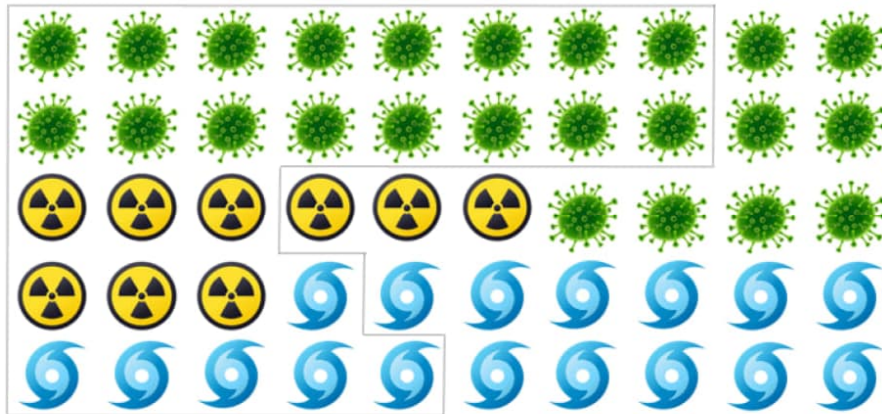
Distribution of the 50 studies reviewed.

a, Fifty reviewed studies are categorised by three disaster types. **b**, accumulation of studies over time has increased recently (solid line), catching up faster for more recent disasters (dashed line). The x-axis refers to the year of publication (for solid line) or disaster occurrence (for dashed line), and starts from 1880 because the earliest disaster covered by the reviewed studies as the 1882 measles outbreak in Iceland.

**D. S. Lee (Presenter),
E. Batyra, A. Castro,
and J. Wilde**

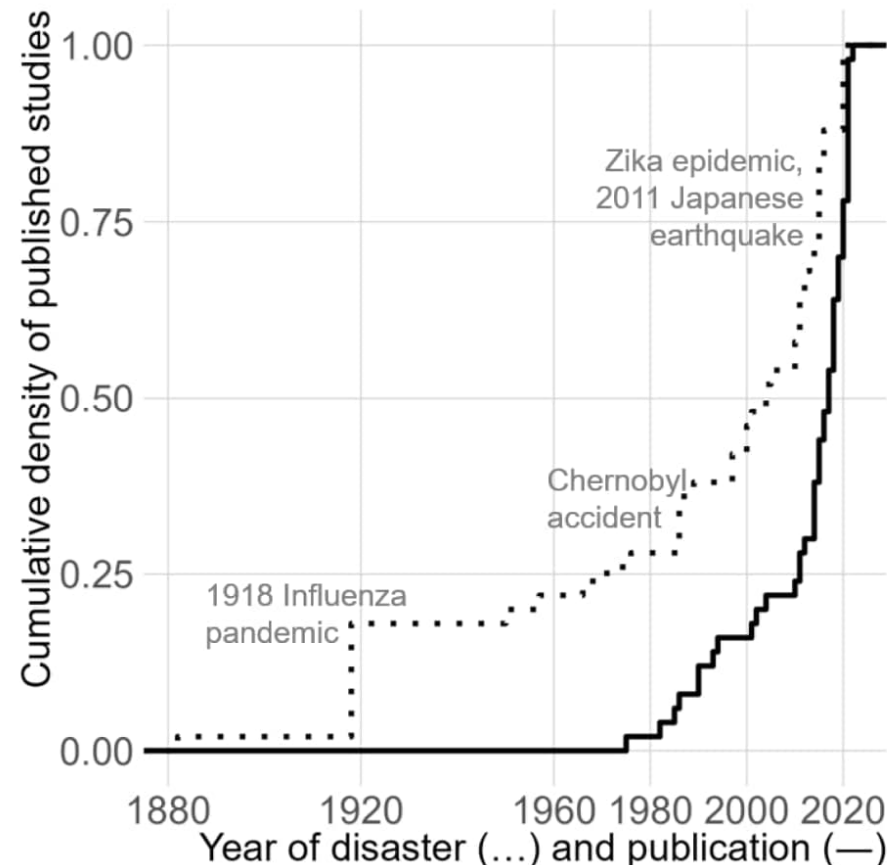
a

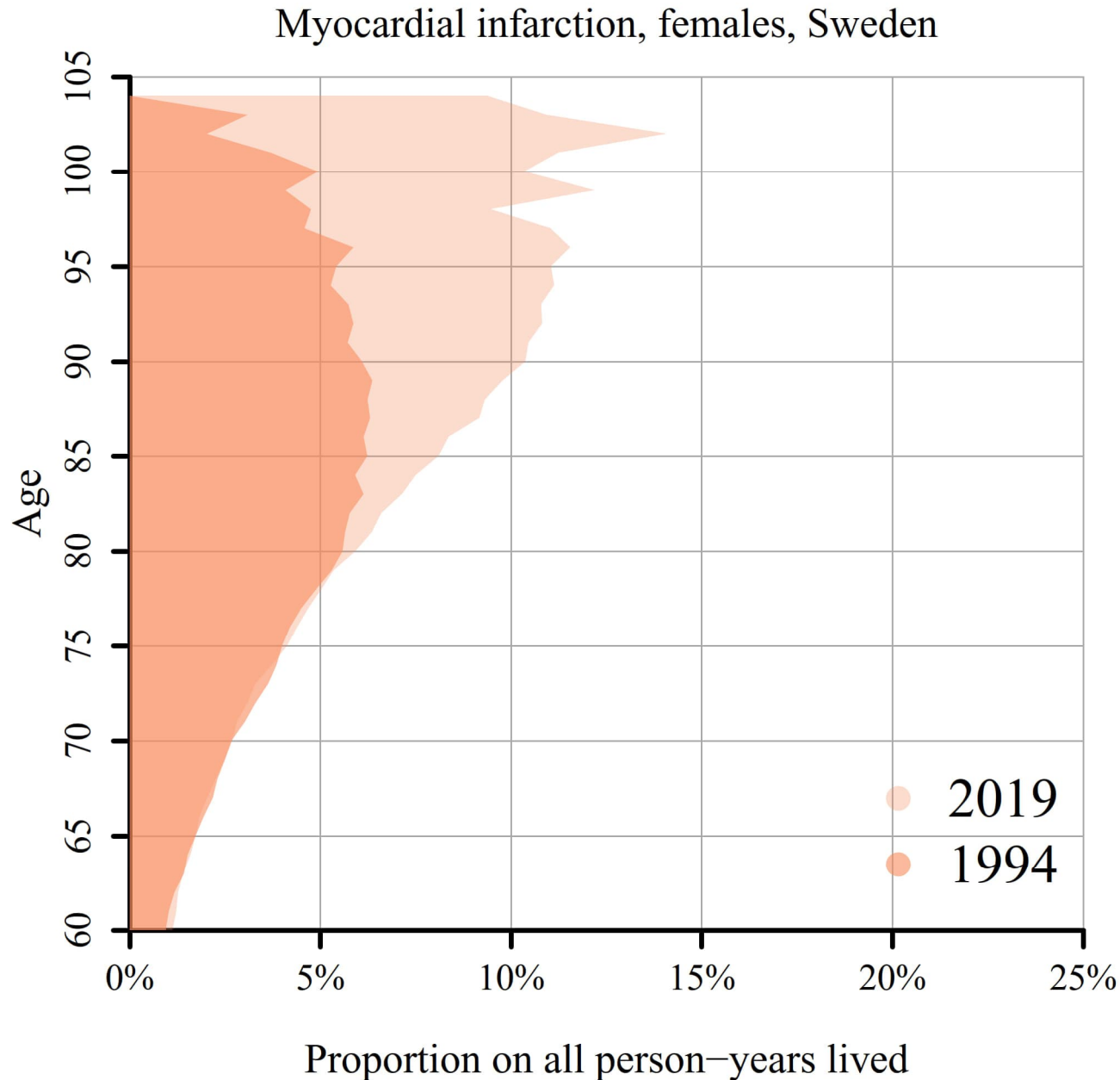
-  Disease outbreaks (48%)
-  Industrial disasters (18%)
-  Physical disasters (34%)



52% of studies covered
Brazil, Japan, Italy, or US

b





PAA SESSION P3: THE CONTRIBUTION OF MYOCARDIAL INFARCTION TO RURAL-URBAN MORTALITY DIFFERENCES IN GERMANY

Proportion of person-years lived by women
with a previous myocardial infarction, Sweden.

SOURCE: own illustration

RESEARCH
FINDINGS

M. Ebeling, M. Muehlichen,
and S. Kluesener,



PAA SESSION P4: EDITS ON WIKIPEDIA IN RESPONSE TO BIG MIGRATION EVENTS

Proportion views per day on Wikipedia pages
dedicated to some cities in Poland across
different languages (i.e., English as a baseline,
Polish, and Ukrainian).

SOURCE: Carolina Coimbra Vieira et al. Edits on
Wikipedia in response to big migration events. (2023)

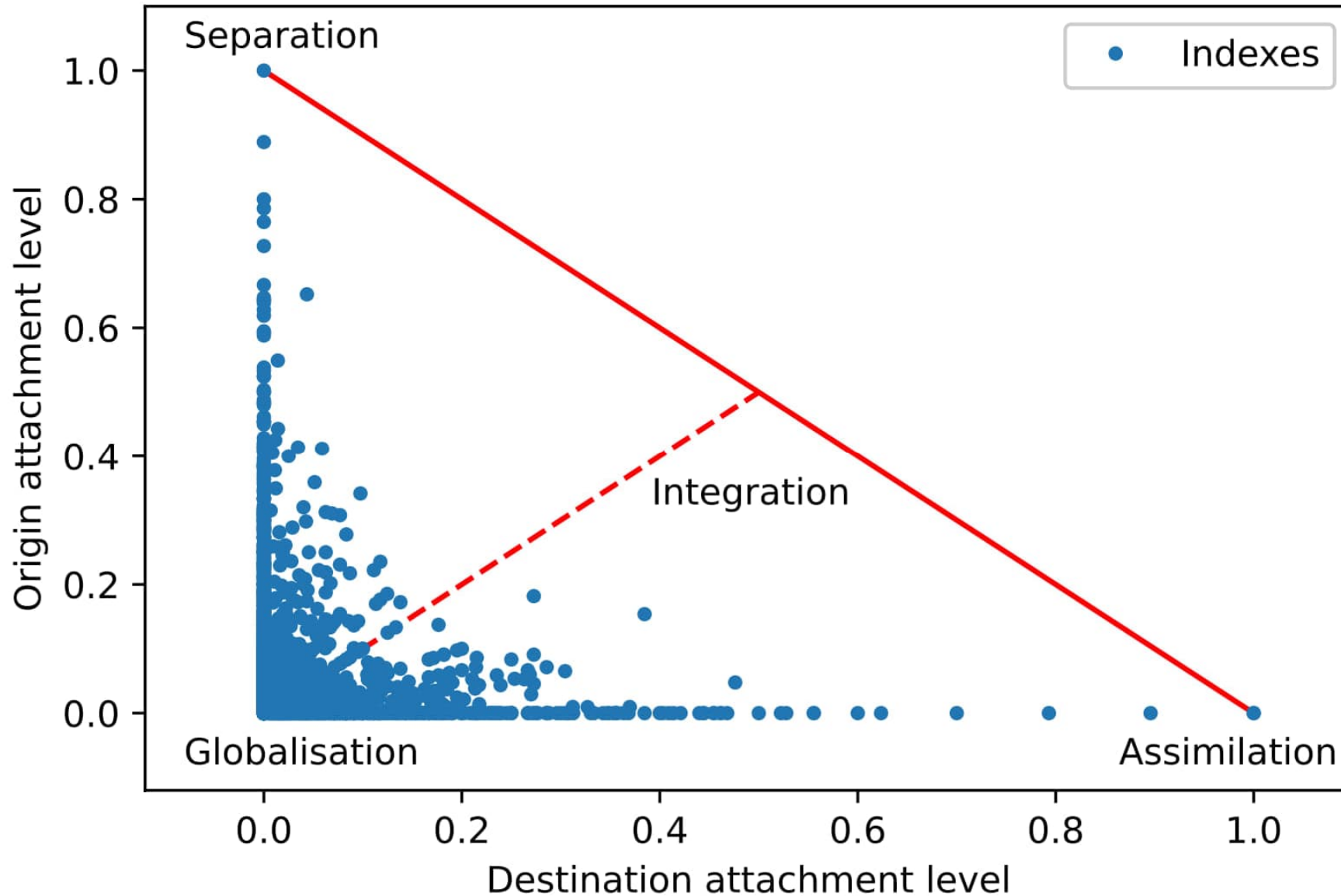
RESEARCH
FINDINGS

C. Coimbra Vieira (Presenter),
E. Sanliturk, and E. Zagheni





PAA SESSION P4:
**ORIGIN AND
DESTINATION
ATTACHMENT:**
STUDY OF CULTURAL
INTEGRATION ON
TWITTER

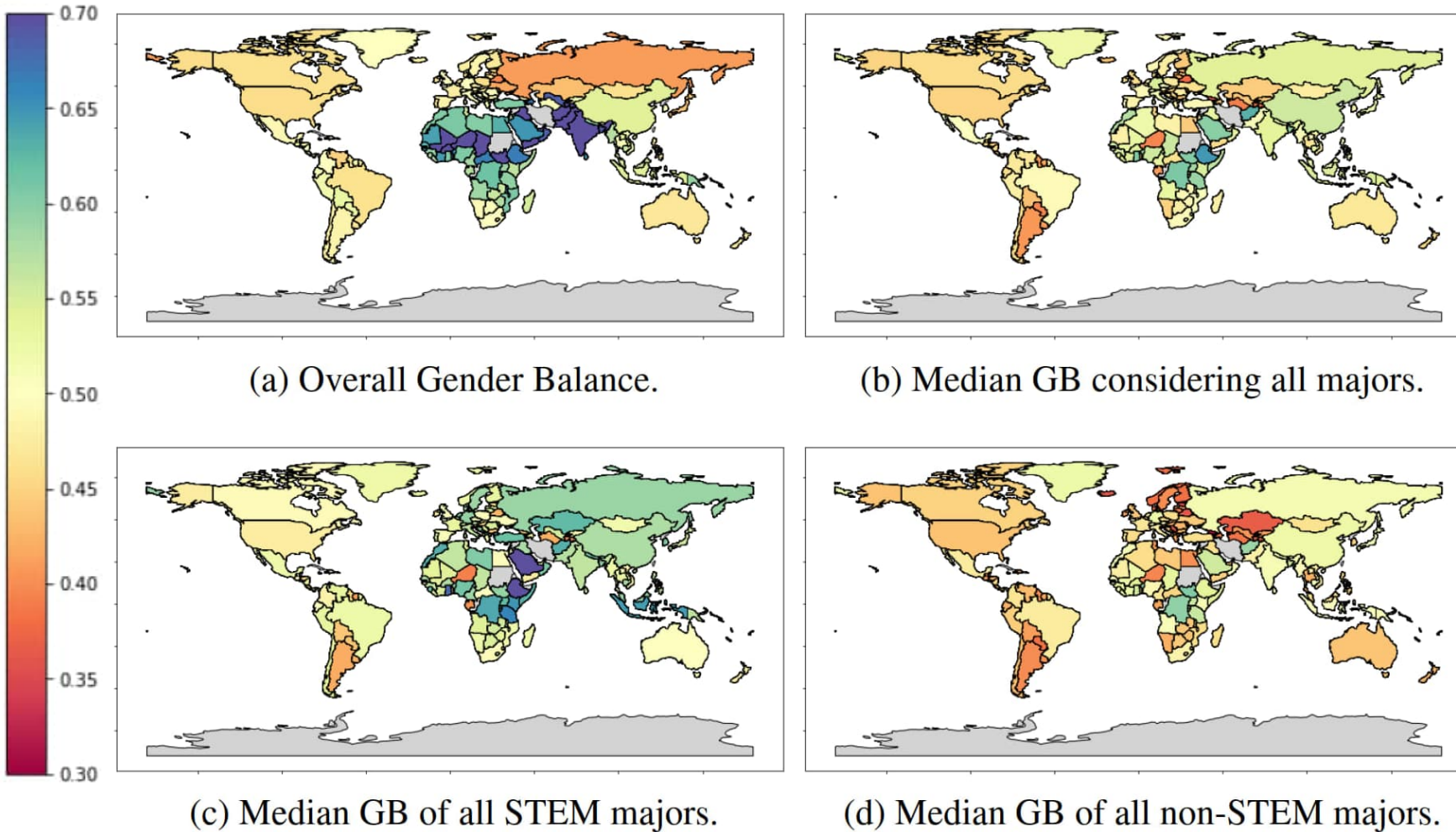


RESEARCH
FINDINGS

J. Kim (Presenter),
A. Sîrbu, G. Rossetti,
F. Giannotti, and
H. Rapoport

PAA SESSION P7: Contrasting Global Gender Gaps in STEM Using Facebook Data and Offline Indicators

RESEARCH
FINDINGS



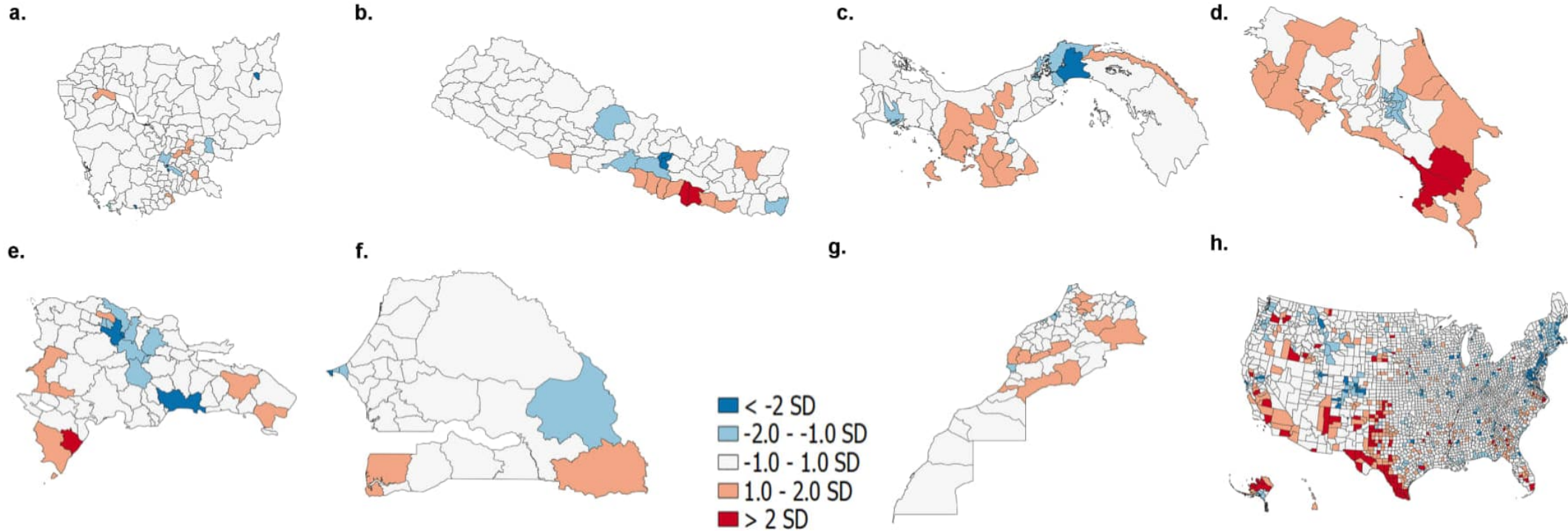
Overall Gender Balance (OGB) and Gender Balance (GB) across countries. Countries are colored from the highest proportion of women (red) to the highest proportion of men (blue).

SOURCE: Carolina Coimbra Vieira et al.
Contrasting Global Gender Gaps in STEM
using Facebook Data and Offline
Indicators. (2023)

**C. Coimbra Vieira
(Presenter) and
M. Vasconcelos**

PAA SESSION P7: Methodological Considerations in Social Vulnerability Index Construction Across International Contexts

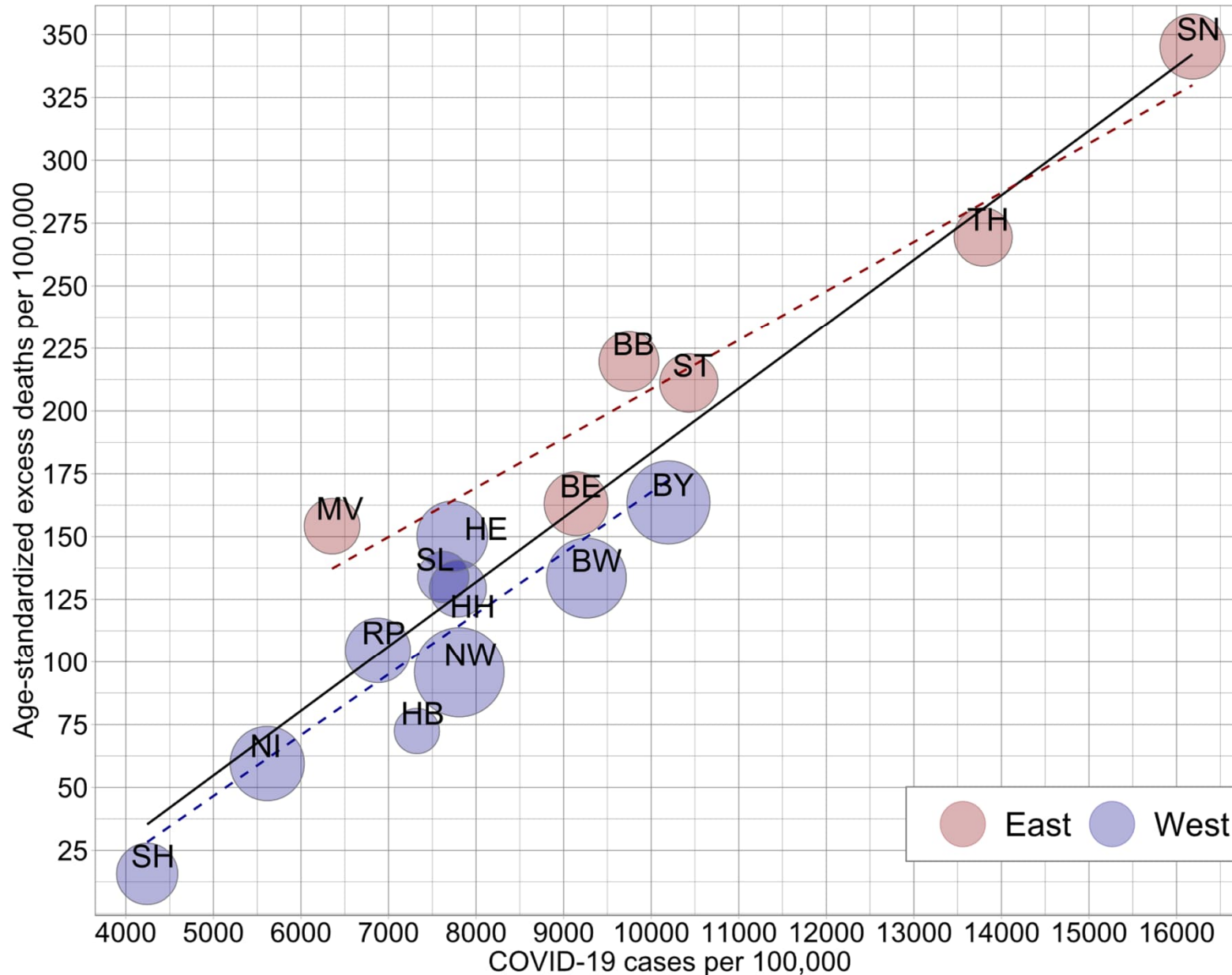
RESEARCH
FINDINGS



Map of Social Vulnerability Index for eight countries: Cambodia, Nepal, Costa Rica, Panama, Dominican Republic, Senegal, Morocco, and US.

SOURCE: Ronak Paul et al. Methodological Considerations in Social Vulnerability Index Construction Across International Contexts. (2023)

S. Reid (Presenter), R. Paul, C. Coimbra Vieira, C. Wolfe, Y. Zhao, Y. Zhang, and R. Chunara



PAA SESSION P7: VARIATION IN THE BURDEN OF COVID-19 PANDEMIC ACROSS THE FEDERAL STATES IN GERMANY:

THE ROLE OF REPORTED COVID-19 MORBIDITY AND
SELECTED STRUCTURAL INDICATORS

RESEARCH
FINDINGS

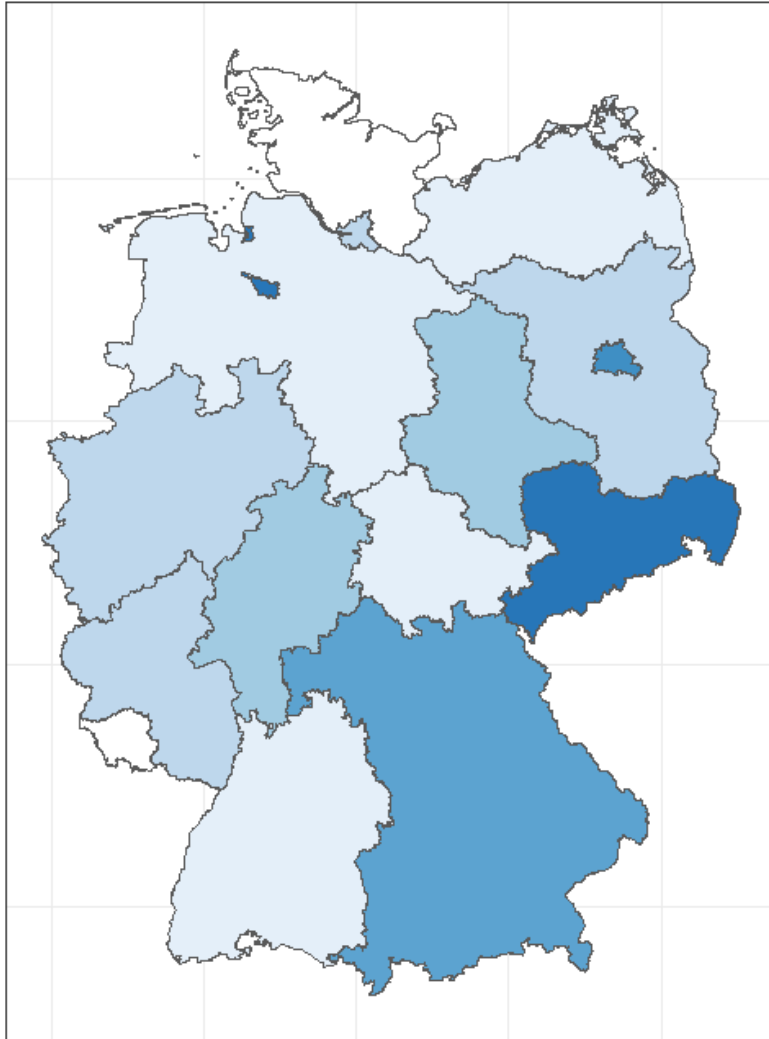
Association between cumulative numbers of excess deaths and COVID-19 cases per 100,000 population in Germany (week 10 of 2020 - week 52 of 2021)

**M. Kolobova (Presenter),
D. Jdanov, D. Jasilionis,
V. M. Shkolnikov, and R. Rau**

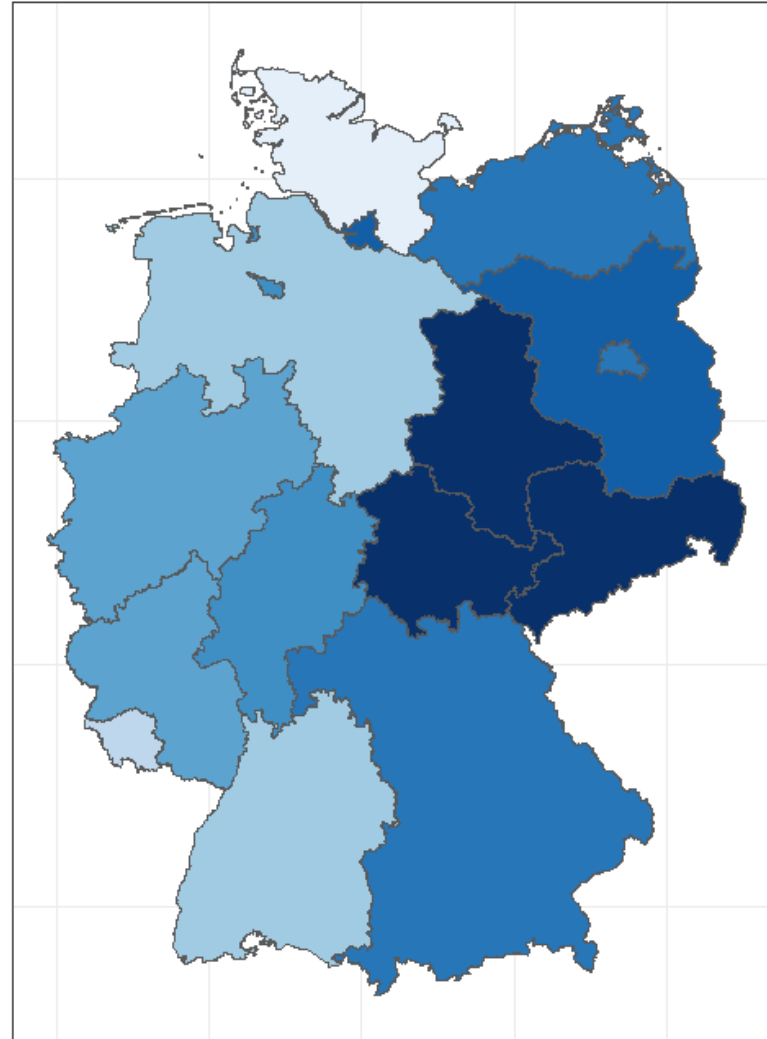
Losses in life expectancy at birth and Excess years of life lost

Losses in Life Expectancy at birth

2020

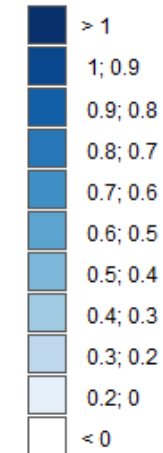


2021



PAA SESSION 155-3: EFFECTS OF COVID-19 PANDEMIC ON LIFE EXPECTANCY AND PRE- MATURE MORTALITY IN THE GERMAN FEDERAL STATES IN 2020 AND 2021

e0_losses (years)

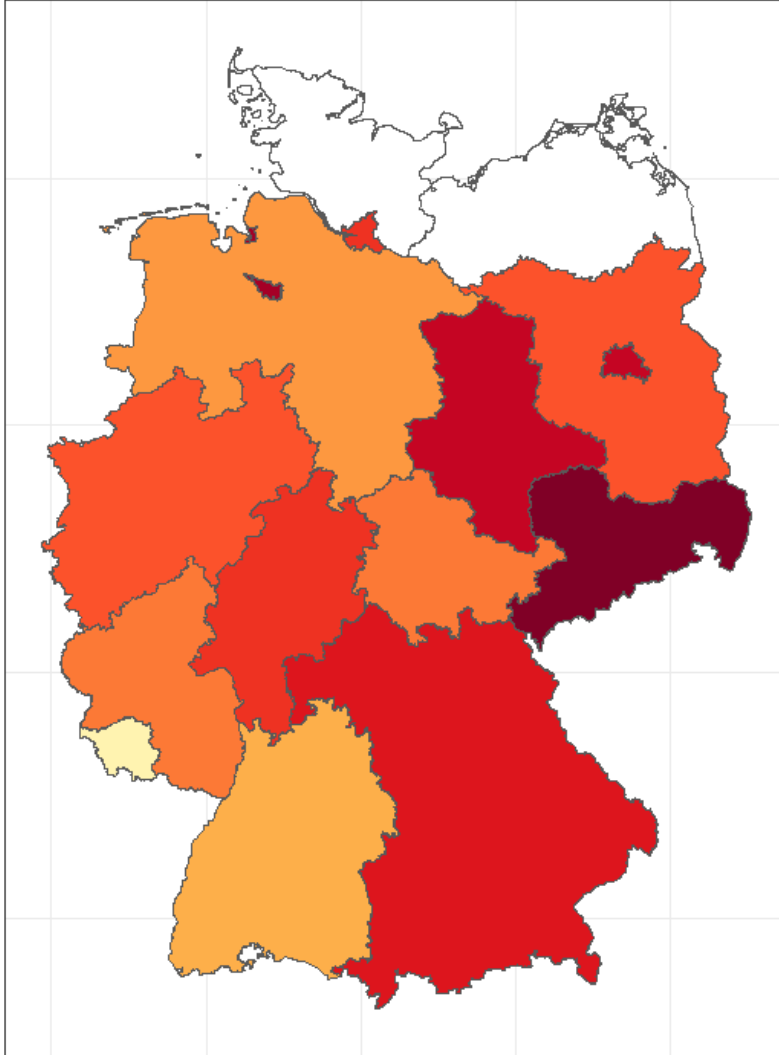


RESEARCH
FINDINGS

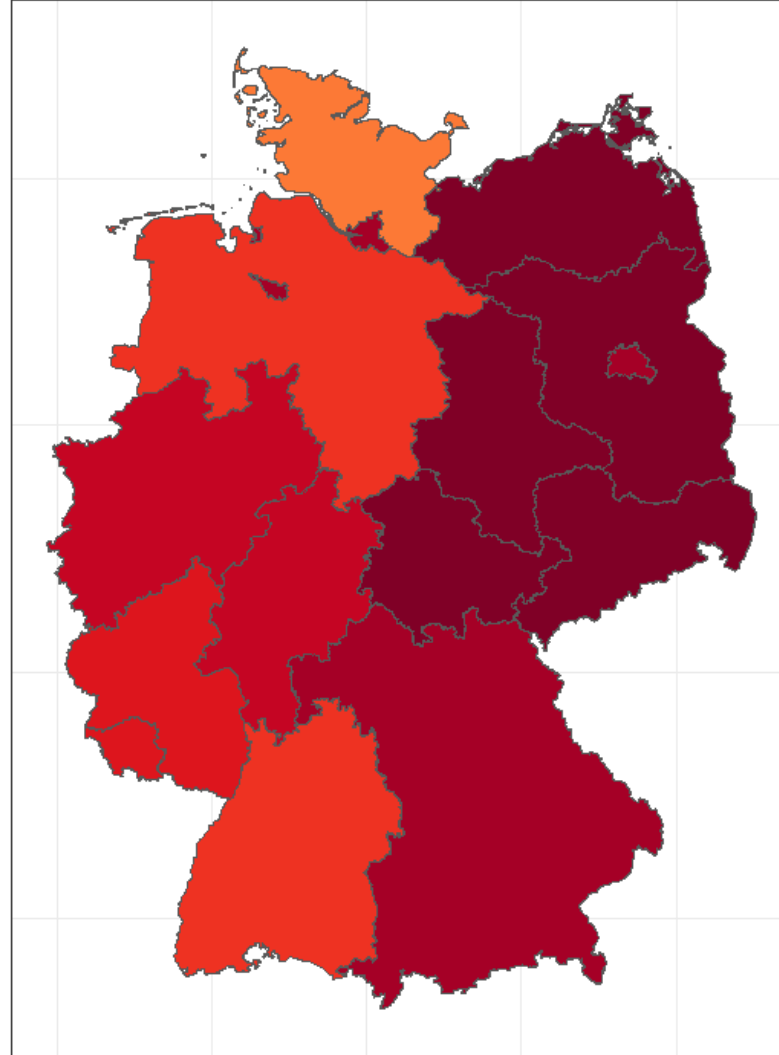
I. Marinetti (Presenter),
D. Jdanov, P. Grigoriev,
S. Kluesener, and F. Janssen

Excess Years of Life Lost

2020

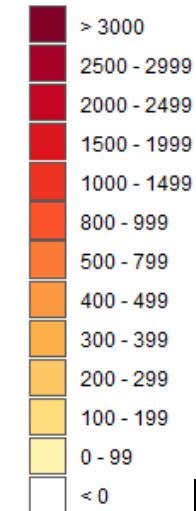


2021



PAA SESSION 155-3:
EFFECTS OF COVID-19
PANDEMIC ON LIFE
EXPECTANCY AND PRE-
MATURE MORTALITY IN
THE GERMAN FEDERAL
STATES IN 2020 AND 2021

Excess YLL
per 100 000 population



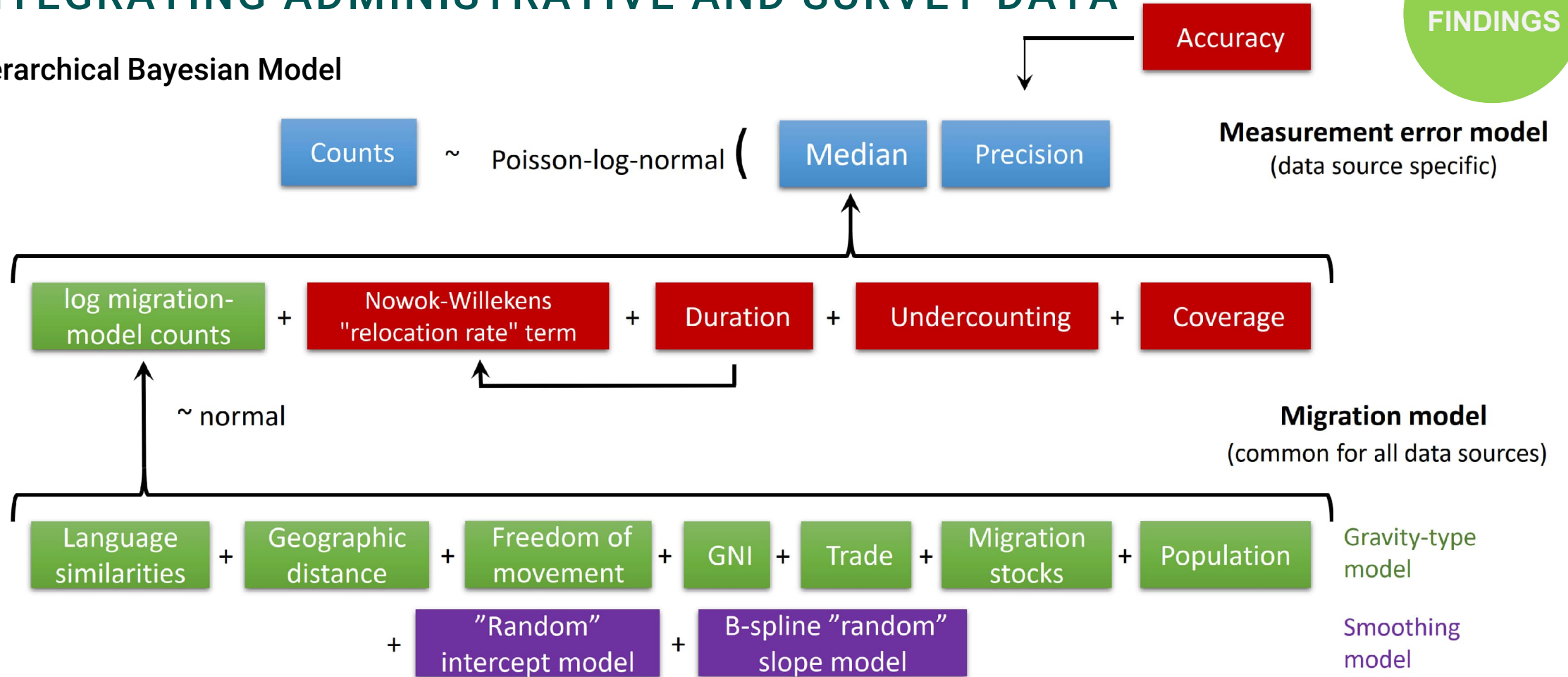
RESEARCH
FINDINGS

I. Marinetti (Presenter),
D. Jdanov, P. Grigoriev,
S. Kluesener, and F. Janssen

PAA SESSION 166-2: MODELING INTERNATIONAL MIGRATION FLOWS IN EUROPE BY INTEGRATING ADMINISTRATIVE AND SURVEY DATA

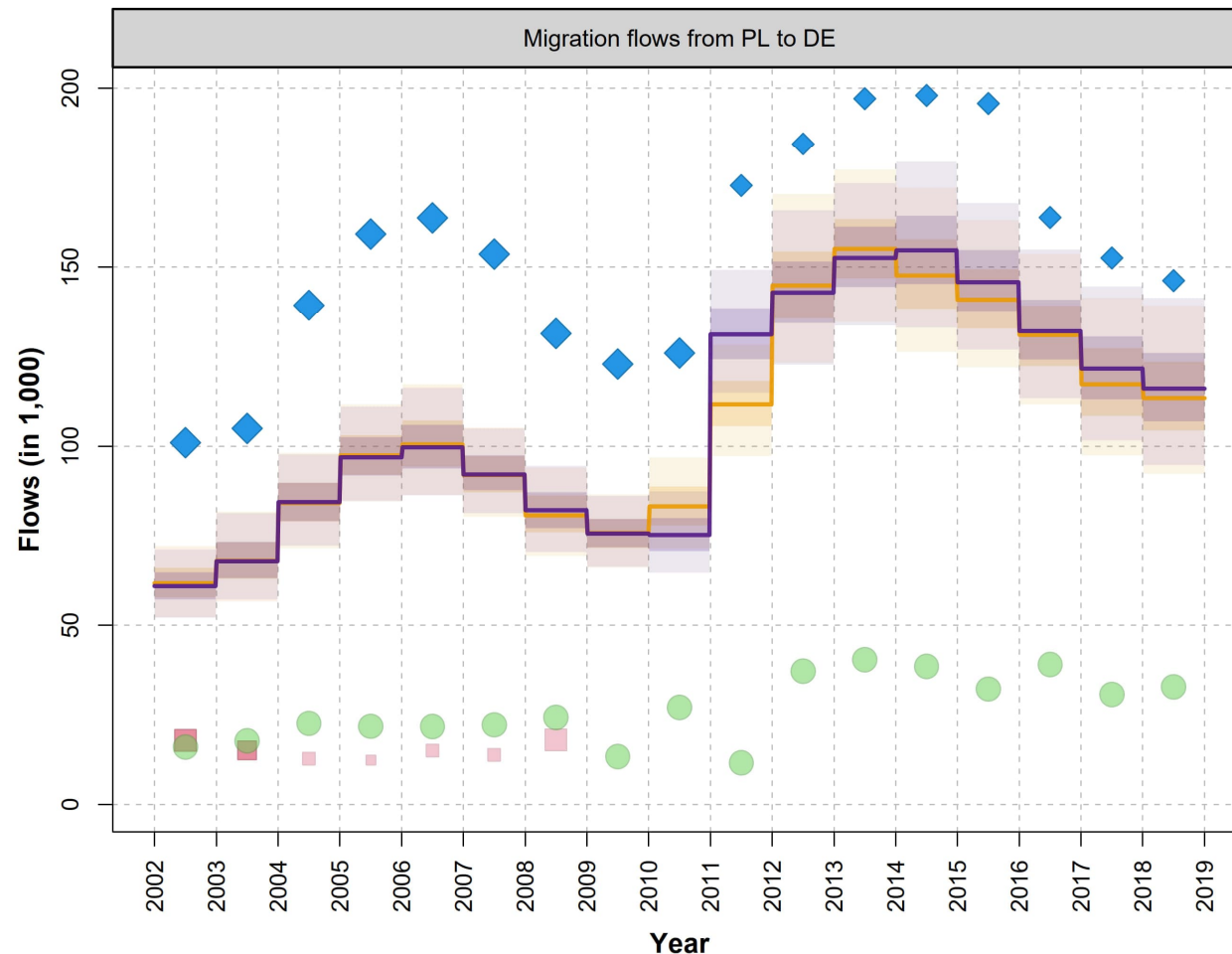


Hierarchical Bayesian Model

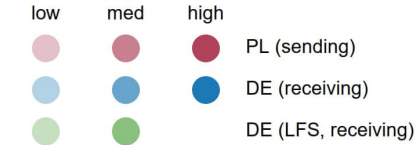


E. del Fava, A. Wiśniowski, M. J. Danko, and E. Zagheni

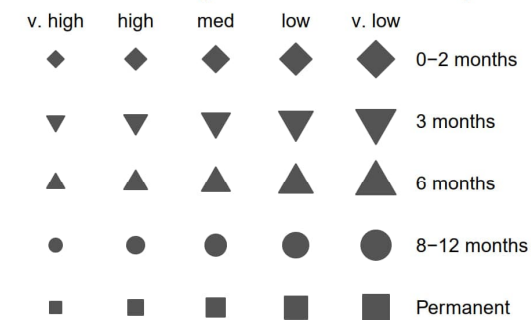
PAA SESSION 166-2: MODELING INTERNATIONAL MIGRATION FLOWS IN EUROPE BY INTEGRATING ADMINISTRATIVE AND SURVEY DATA



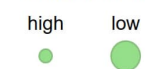
Accuracy and data source



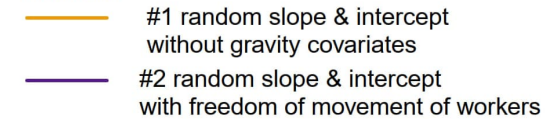
Undercounting and duration of stay



Undercounting of LFS data



Models



RESEARCH
FINDINGS

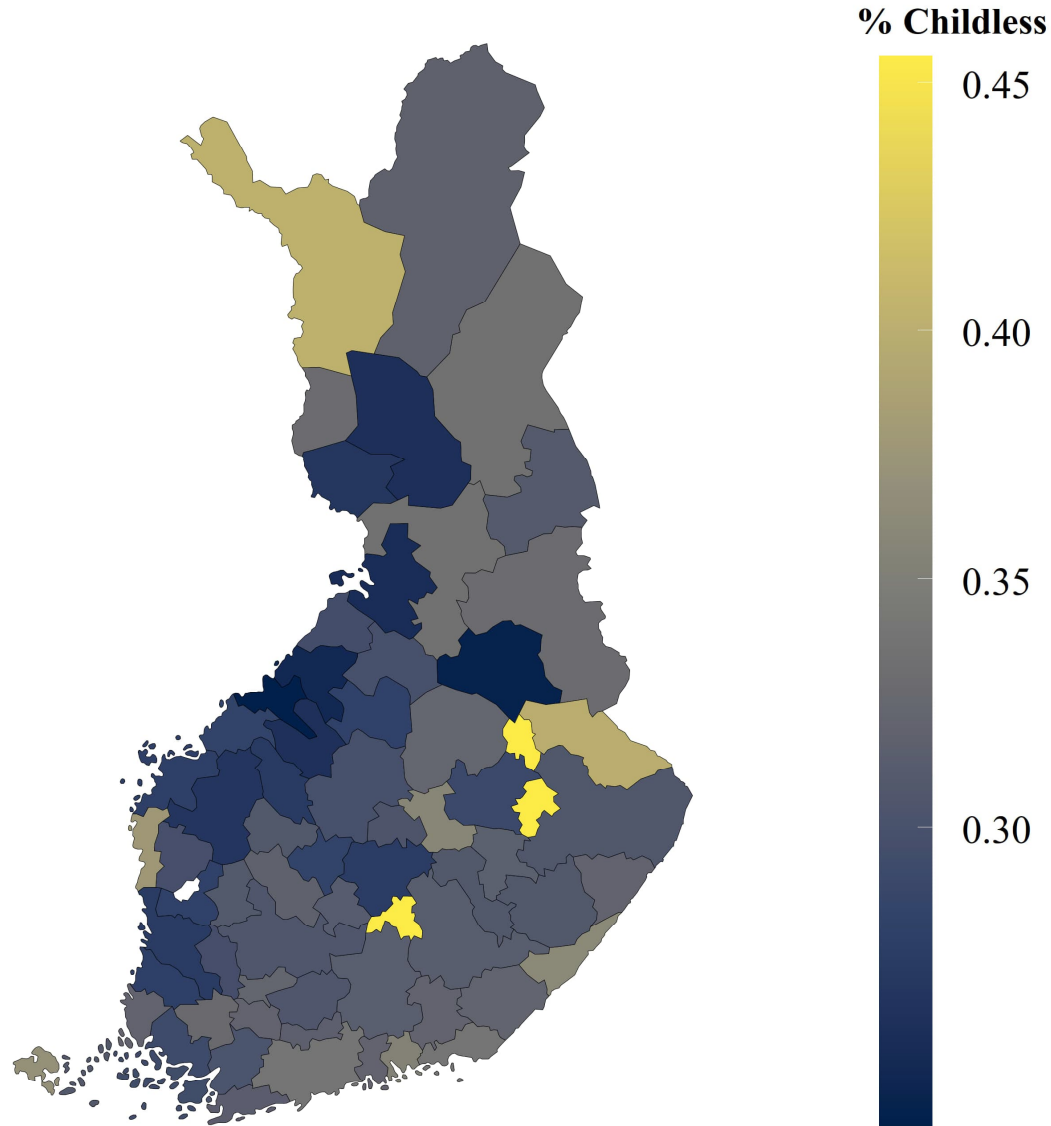
E. del Fava,
A. Wiśniowski,
M. J. Danko,
and E. Zagheni

PAA SESSION 221-1: TOO MANY MEN? MODERNIZATION AND THE RELEVANCE OF POPULATION IMBALANCES FOR MALE CHILDLESSNESS

RESEARCH
FINDINGS

Male childlessness at age 45 in cohorts 1968–1975
Spatial distribution of childlessness in Finland

Finland exhibits large spatial variation in childlessness. The West exhibits the lowest levels of childlessness among men, while the North and the East exhibit high shares of childless men.



Source: Finnish register data accessed via FIONA.

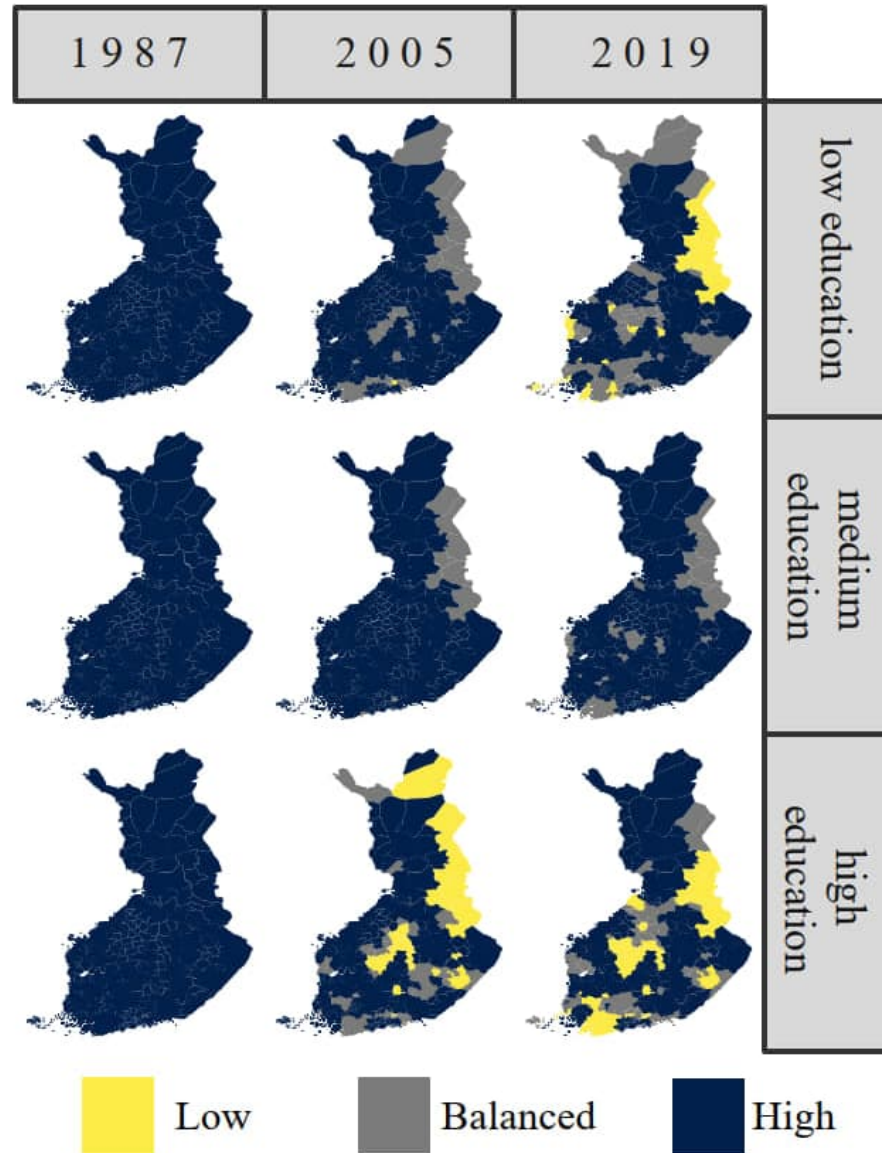
H.-A. Schubert (Presenter)

PAA SESSION 221-1: TOO MANY MEN? MODERNIZATION AND THE RELEVANCE OF POPULATION IMBALANCES FOR MALE CHILDLESSNESS

RESEARCH FINDINGS

Partner availability by education and year (age 30)
Regional partner markets in Finland

Overall the partner market situation of men has worsened over time. In particular, the North and the East of Finland exhibit compressed and tight partner markets for men.

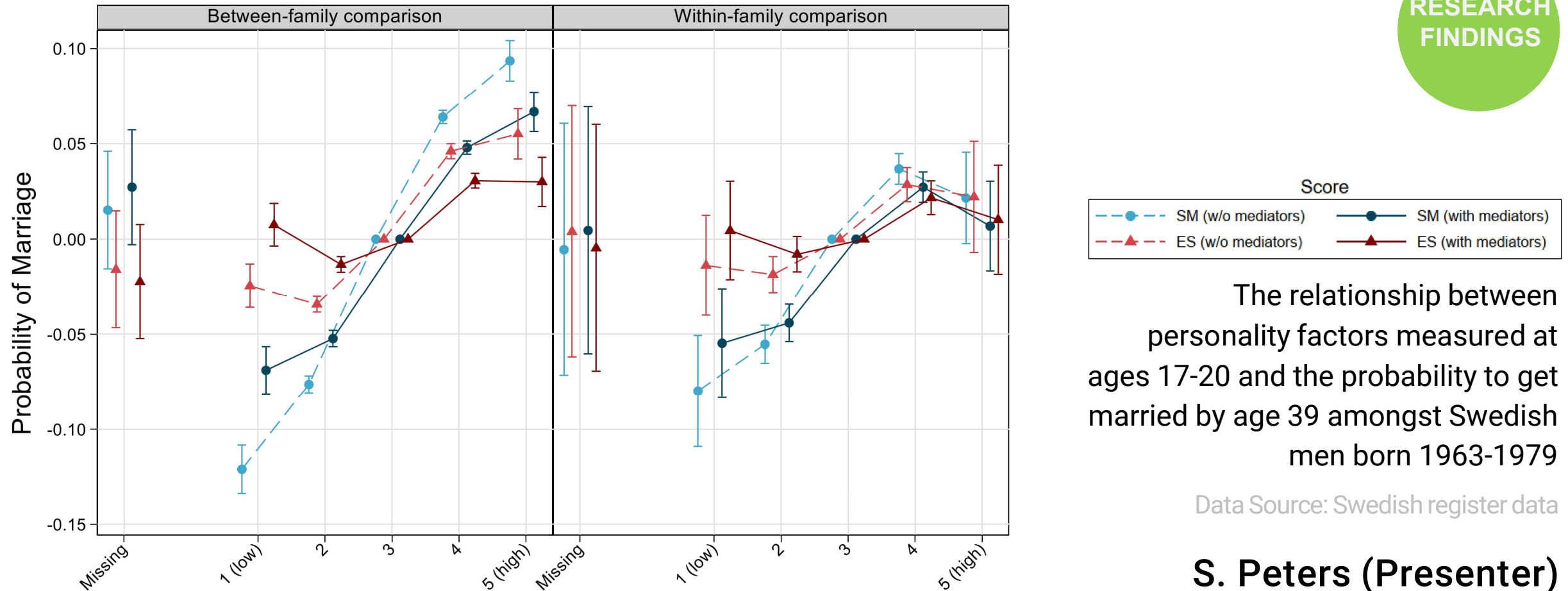


Source: Finnish Register Data.

H.-A. Schubert (Presenter)

PAA SESSION 221-4: THE PROSPECTIVE ASSOCIATION BETWEEN PERSONALITY FACTORS AND FAMILY FORMATION PROCESSES AMONG MALES IN SWEDEN: EVIDENCE FROM REGISTER DATA

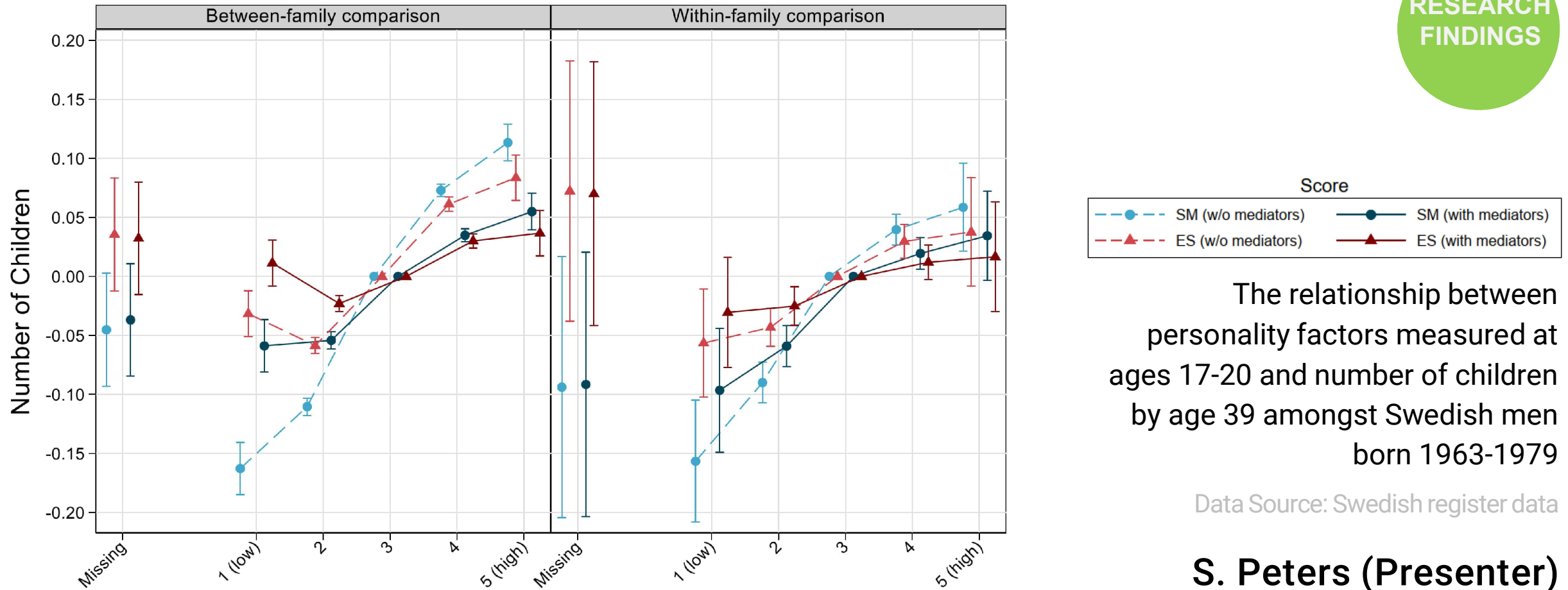
RESEARCH
FINDINGS



S. Peters (Presenter)

PAA SESSION 221-4: THE PROSPECTIVE ASSOCIATION BETWEEN PERSONALITY FACTORS AND FAMILY FORMATION PROCESSES AMONG MALES IN SWEDEN: EVIDENCE FROM REGISTER DATA

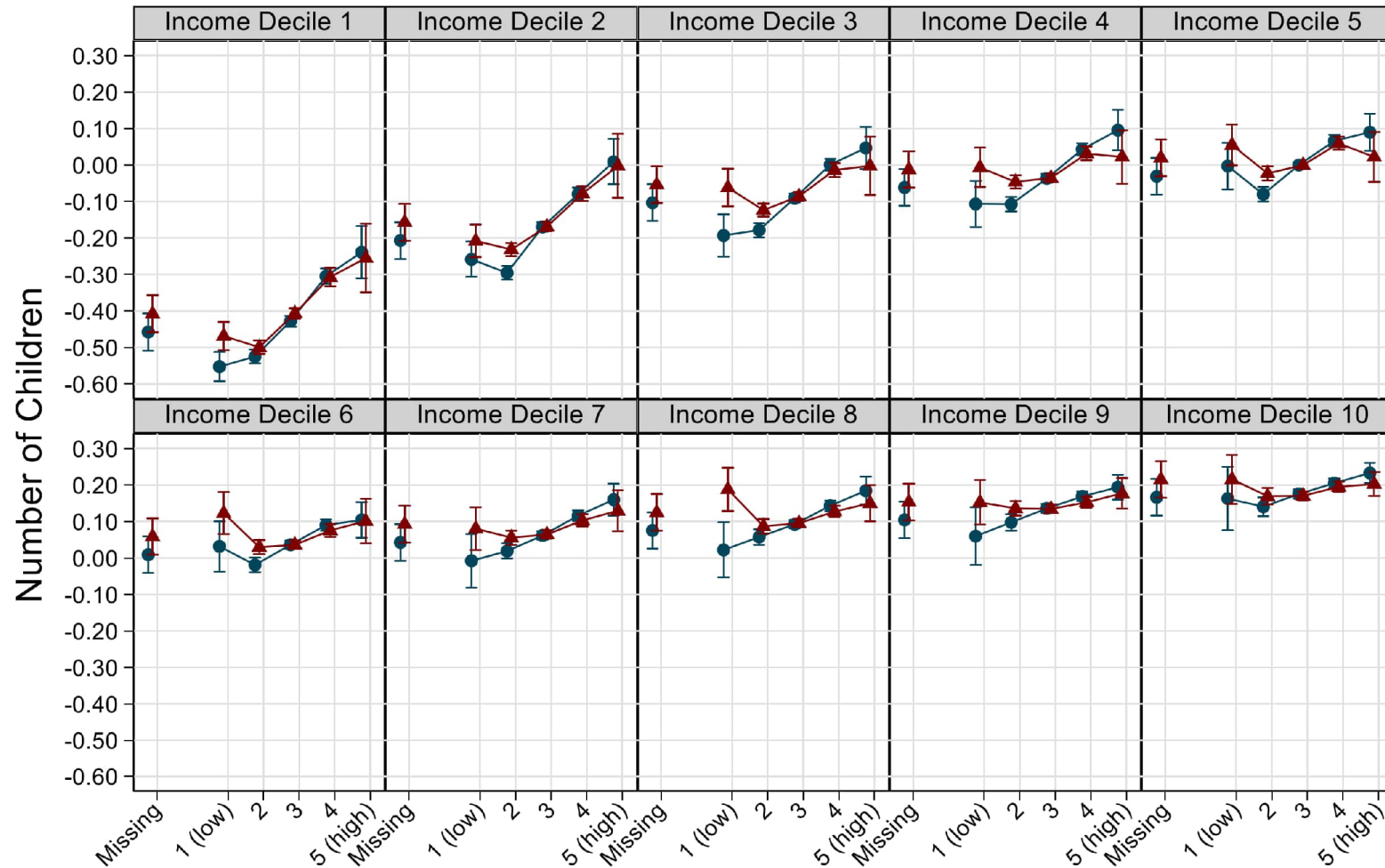
RESEARCH
FINDINGS



S. Peters (Presenter)

PAA SESSION 221-4: THE PROSPECTIVE ASSOCIATION BETWEEN PERSONALITY FACTORS AND FAMILY FORMATION PROCESSES AMONG MALES IN SWEDEN: EVIDENCE FROM REGISTER DATA

RESEARCH
FINDINGS



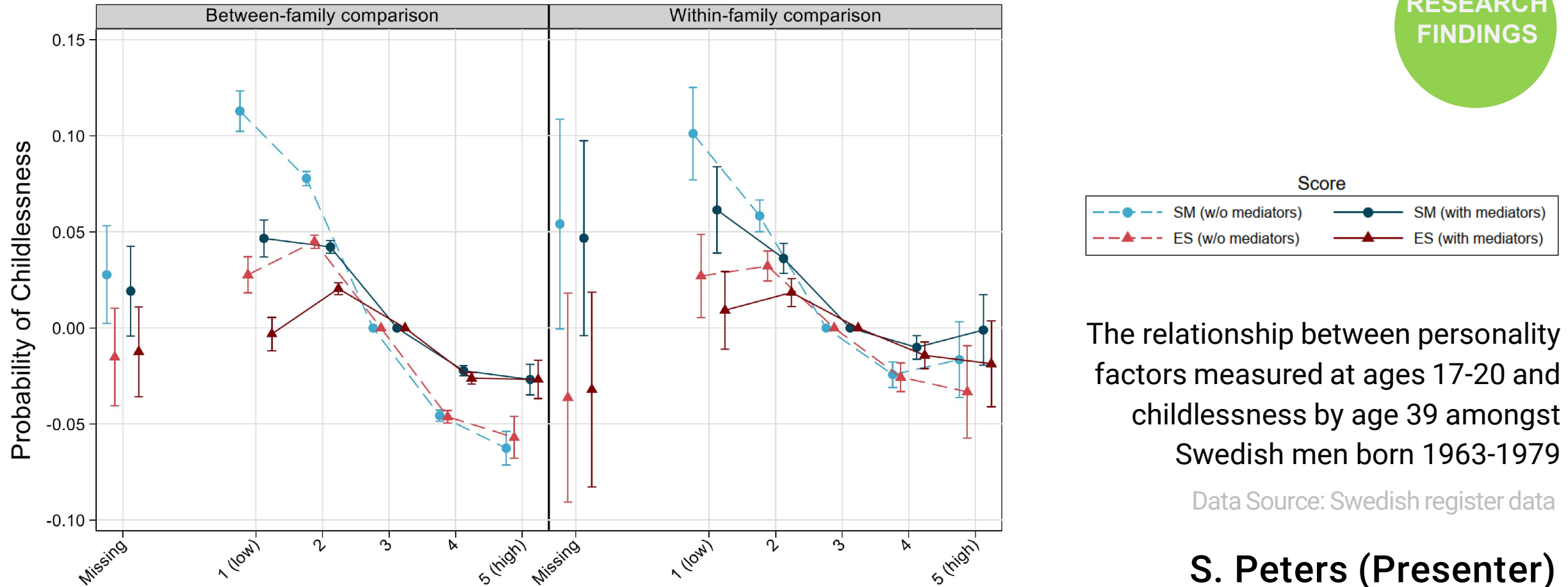
The relationship between personality factors measured at ages 17-20 and number of children by age 39 amongst Swedish men born 1963-1979 (by income deciles)

Data Source: Swedish register data

S. Peters (Presenter)

PAA SESSION 221-4: THE PROSPECTIVE ASSOCIATION BETWEEN PERSONALITY FACTORS AND FAMILY FORMATION PROCESSES AMONG MALES IN SWEDEN: EVIDENCE FROM REGISTER DATA

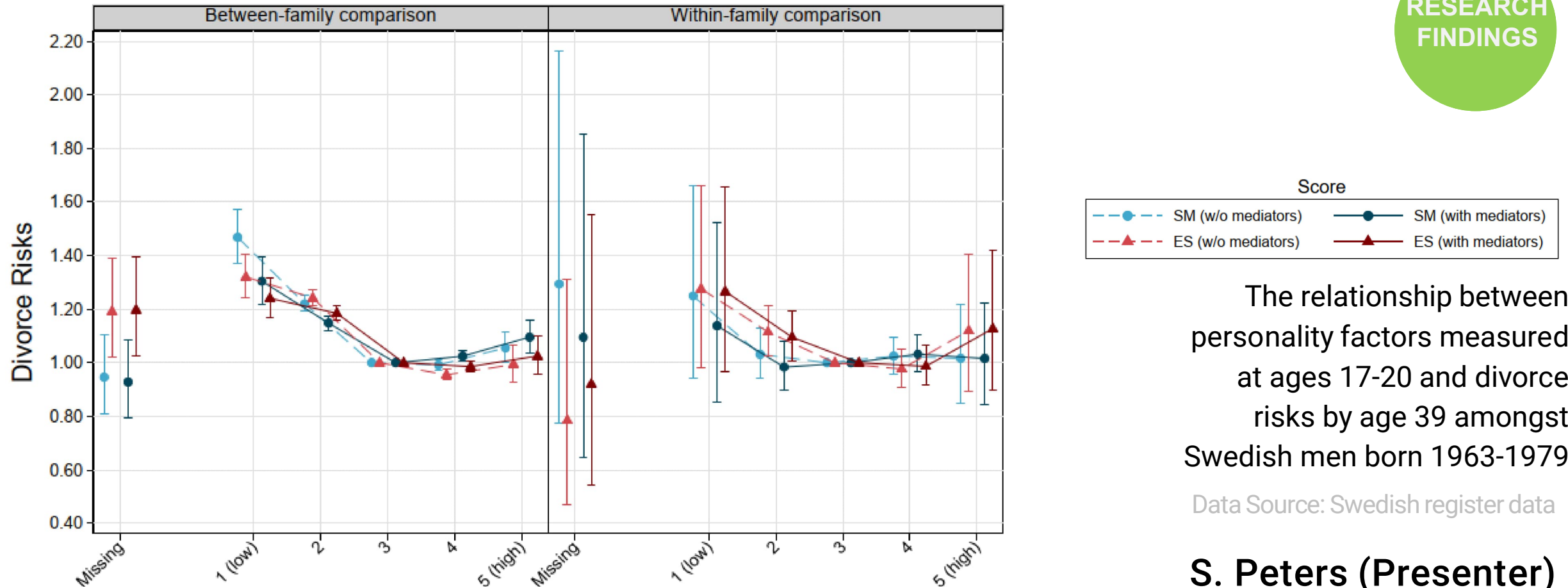
RESEARCH FINDINGS



S. Peters (Presenter)

PAA SESSION 221-4: THE PROSPECTIVE ASSOCIATION BETWEEN PERSONALITY FACTORS AND FAMILY FORMATION PROCESSES AMONG MALES IN SWEDEN: EVIDENCE FROM REGISTER DATA

RESEARCH FINDINGS



S. Peters (Presenter)

THANK YOU!

